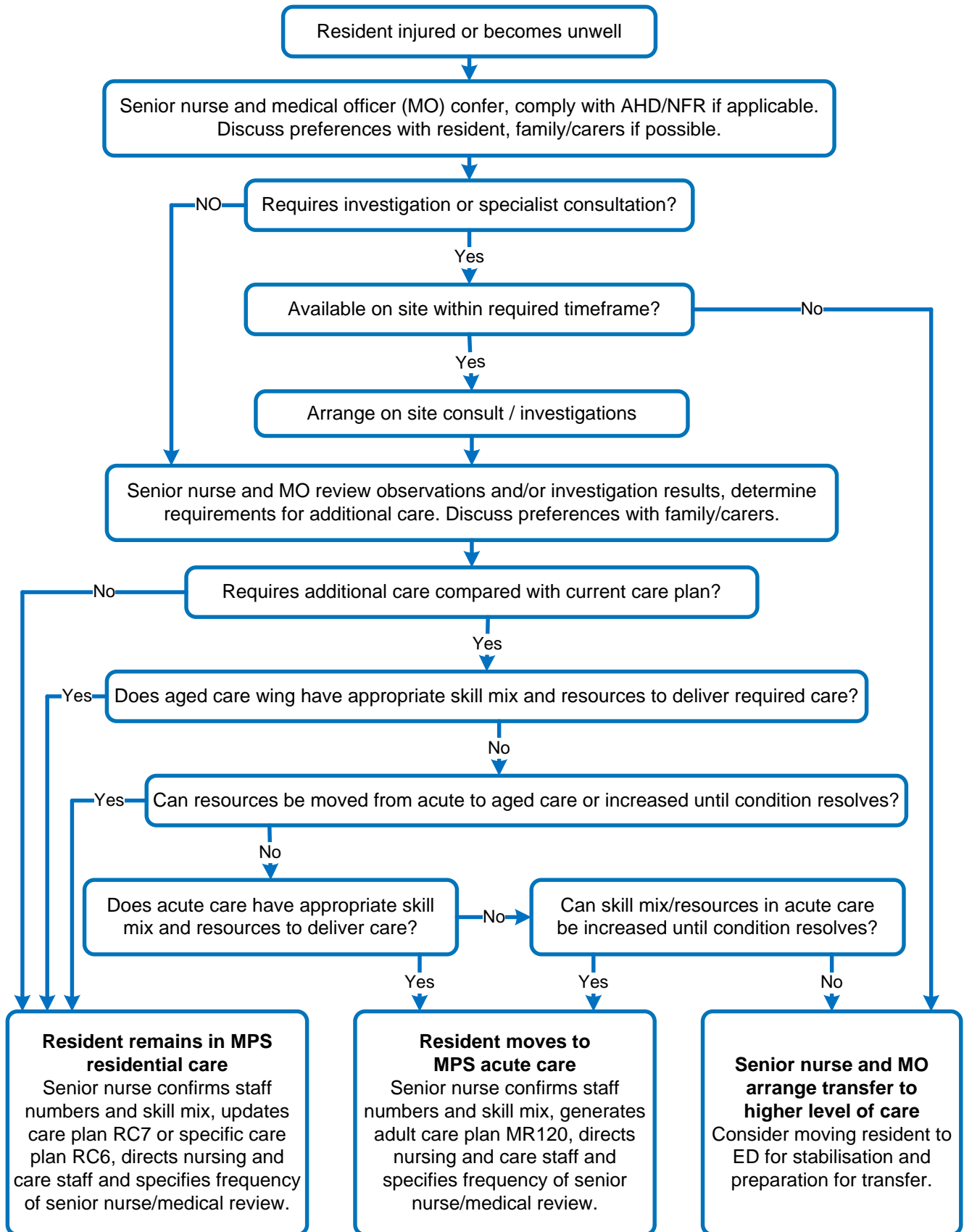




Care Location for Acutely Unwell MPS Aged Care Resident Flowchart



1. Notes

1. This flowchart is intended to be used in conjunction with the additional references listed below.
2. Senior nurse refers to the most senior nurse currently on duty in the facility. Further escalation is to occur in accordance with the WACHS [Clinical Escalation Including Code Blue – Medical Escalation Response Policy](#) and completed site-specific Adult Observation and Response Escalation and MER template.
3. If there is no medical officer on site or on-call, escalation is to occur in accordance with the site's Adult Observation and Response Escalation and MER template.
4. Depending on the resident's clinical condition, anticipated transfer time and physical configuration/staffing of the Multi-Purpose Service (MPS), consider moving the resident to the Emergency Department (ED) for stabilisation and preparation prior to inter-hospital transfer.
5. The senior nurse and medical officer are each responsible for documenting their respective clinical assessment and decision-making in the resident's [MR 55A Integrated Progress Notes](#).

2. References

[Nursing and Midwifery Board of Australia Nursing Practice Decision Flowchart](#)
[Nursing and Midwifery Board of Australia Nursing Practice Decisions Summary Guide](#)
[Post-Fall Management Guidelines in WA Healthcare Settings](#)

3. Related Policy Documents

WACHS [Advance Health Directive and Enduring Power of Guardianship Guideline](#)
WACHS [Clinical Escalation Including Code Blue – Medical Escalation Response Policy](#)
WACHS [Documentation Clinical Practice Standard](#)
WACHS [Falls Prevention and Management Clinical Practice Standard](#)
WACHS [Interhospital Patient Transfer Policy](#)
WACHS [Not for Cardiopulmonary Resuscitation Policy](#)
WACHS [Residential Aged Care Services Policy](#)

4. Related WA Health Policies

WA Health [Post-Fall Management Guidelines in Western Australian Healthcare Settings](#)

**This document can be made available in alternative formats
on request for a person with a disability**

Contact:	A/Manager Aged and Subacute Care (H.MacKenzie)		
Directorate:	Aged Care	TRIM Record #	ED-CO-16-10827
Version:	1.00	Date Published:	9 September 2016

Copyright to this material is vested in the State of Western Australia unless otherwise indicated. Apart from any fair dealing for the purposes of private study, research, criticism or review, as permitted under the provisions of the *Copyright Act 1968*, no part may be reproduced or re-used for any purposes whatsoever without written permission of the State of Western Australia.