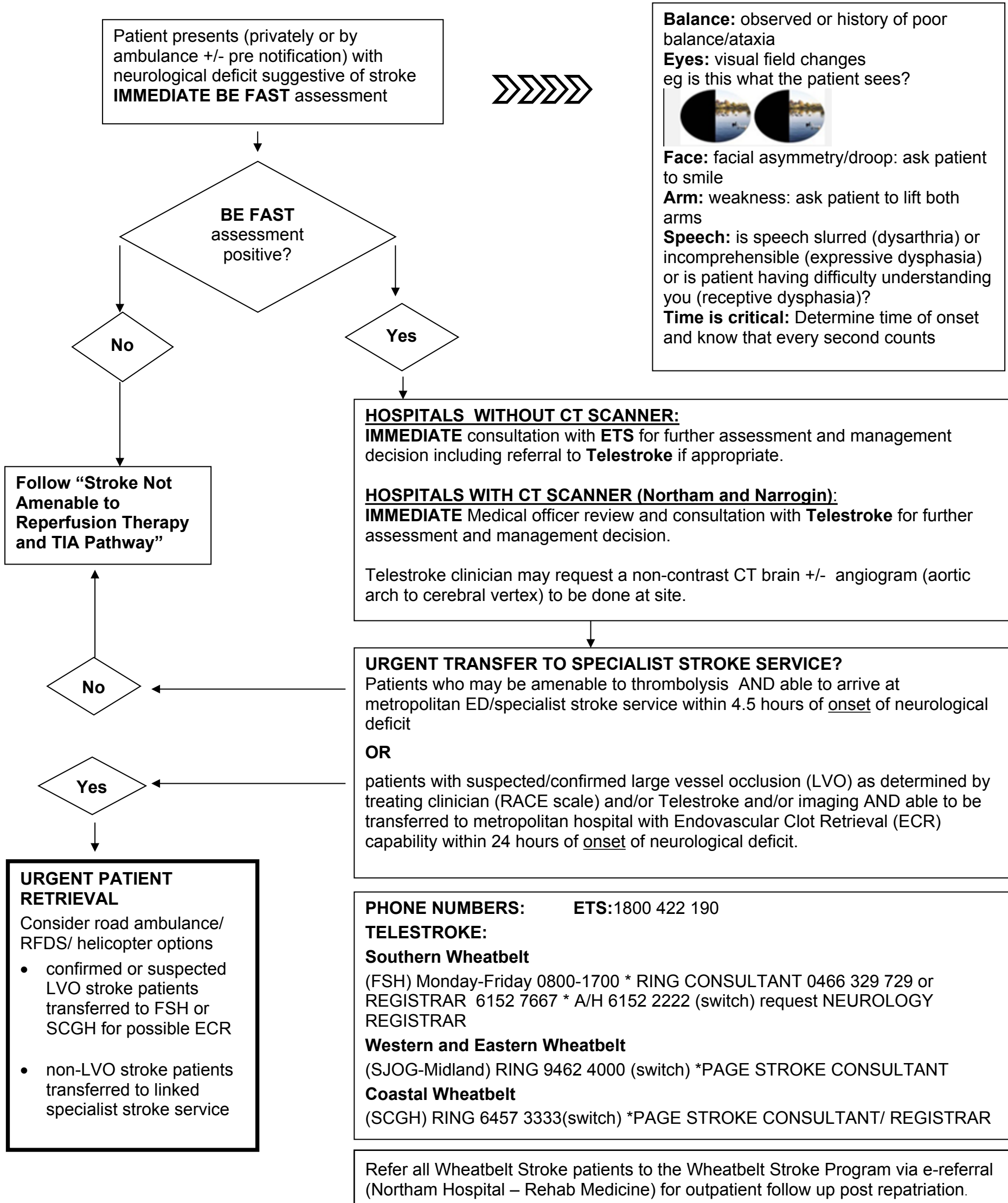




Wheatbelt Hyperacute Stroke Pathway

Identification and Fast-tracking Transfer of Patients who may be Amenable to Revascularisation



This document can be made available in alternative formats on request for a person with a disability

Contact: Northam Hospital FACEM/Clinical Lead (A. Varone)	Directorate: Operations - Wheatbelt
Version: 3.00	EDRMS Record #: ED-CO-17-69172
Date Published: 19 October 2020	

Copyright to this material is vested in the State of Western Australia unless otherwise indicated. Apart from any fair dealing for the purposes of private study, research, criticism or review, as permitted under the provisions of the *Copyright Act 1968*, no part may be reproduced or re-used for any purposes whatsoever without written permission of the State of Western Australia.