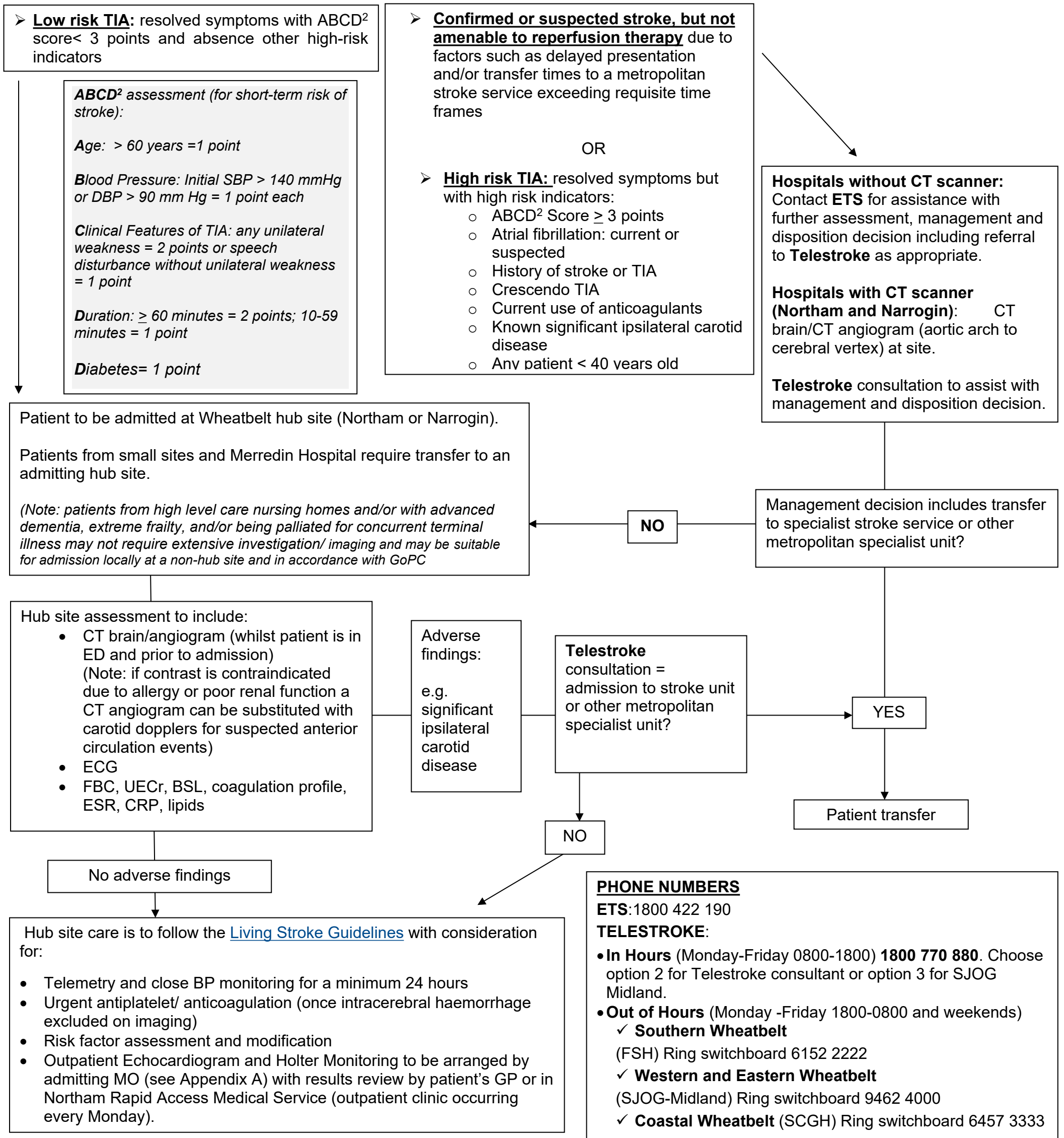




Wheatbelt Stroke Not Amenable to Reperfusion Therapy and TIA Pathway



Complete Outpatient e-referral to the Wheatbelt Stroke Program (Northam Health Service – Rehab Medicine) for all Wheatbelt TIA patients for post TIA follow up

This document can be made available in alternative formats on request for a person with a disability

Contact:	FACEM/Clinical Lead Northam Hospital	Directorate:	Operations - Wheatbelt
Version:	4.00	Date Published:	20 September 2021
		EDRMS Record #:	ED-CO-17-69239

Copyright to this material is vested in the State of Western Australia unless otherwise indicated. Apart from any fair dealing for the purposes of private study, research, criticism or review, as permitted under the provisions of the *Copyright Act 1968*, no part may be reproduced or re-used for any purposes whatsoever without written permission of the State of Western Australia.