



# Therapeutic Infusion Procedure – Bunbury Hospital

## 1. Guiding Principles

Effective: 25 March 2022

This procedure outlines the steps for accepting and processing a referral for a patient to undergo a therapeutic infusion within the Bunbury Hospital.

This procedure should be read in conjunction with the WACHS Medication Prescribing and Administration Policy.

## 2. Procedure

The steps in this procedure are detailed in [Appendix 1: Therapeutic Infusion Flowchart](#).

## 3. Definitions

<b>WEBPAS</b>	Web based patient administration system
<b>PBS</b>	Pharmaceutical Benefits Scheme

## 4. Roles and Responsibilities

**All WACHS clinicians** are accountable for their own practice and are to provide care:

- within their registration status
- in accordance with the codes and guidelines approved by their relevant National Board supported by AHPRA
- within their scope of practice and competence
- within their prescribed responsibilities and duties as defined in their Job Description Form (JDF) and
- within the context of practice that they are operating.

**Site Managers** are to:

- nominate specific staff to complete the referral process
- ensure that all staff undertaking day infusion roles are fully conversant with the requirement for each medication.

**All Staff** are required to work within policies and guidelines to make sure that WACHS is a safe, equitable and positive place to be.

## 5. Compliance

Failure to comply with this procedure may constitute a breach of the WA Health Code of Conduct (Code). The Code is part of the [Integrity Policy Framework](#) issued pursuant to section 26 of the [Health Services Act 2016](#) (WA) and is binding on all WACHS staff which for this purpose includes trainees, students, volunteers,

researchers, contractors for service (including all visiting health professionals and agency staff) and persons delivering training or education within WACHS.

WACHS staff are reminded that compliance with all policies is mandatory.

### 5. Records Management

[Records Management Policy](#)

All WACHS clinical records must be managed in accordance with the [Health Record Management Policy](#).

### 6. Evaluation

Monitoring of compliance with this document is to be carried out by senior medical and nursing staff via reporting and review of clinical incidents relating to adults receiving a therapeutic infusion.

### 7. Standards

[National Safety and Quality Health Service Standards](#) – 4.1a, 4.1b 4.13, 4.15b

### 8. Legislation

[Medicines and Poisons Act 2014 \(WA\)](#)  
[Medicines and Poisons Regulations 2016 \(WA\)](#)

### 9. Related Policy Documents

[Medication Prescribing and Administration Policy](#)  
[High Risk Medications Procedure](#)

### 10. Related WA Health System Policies

[MP 0131/20 - High Risk Medication Policy](#)

### 11. Policy Framework

[Clinical Governance, Safety and Quality](#)

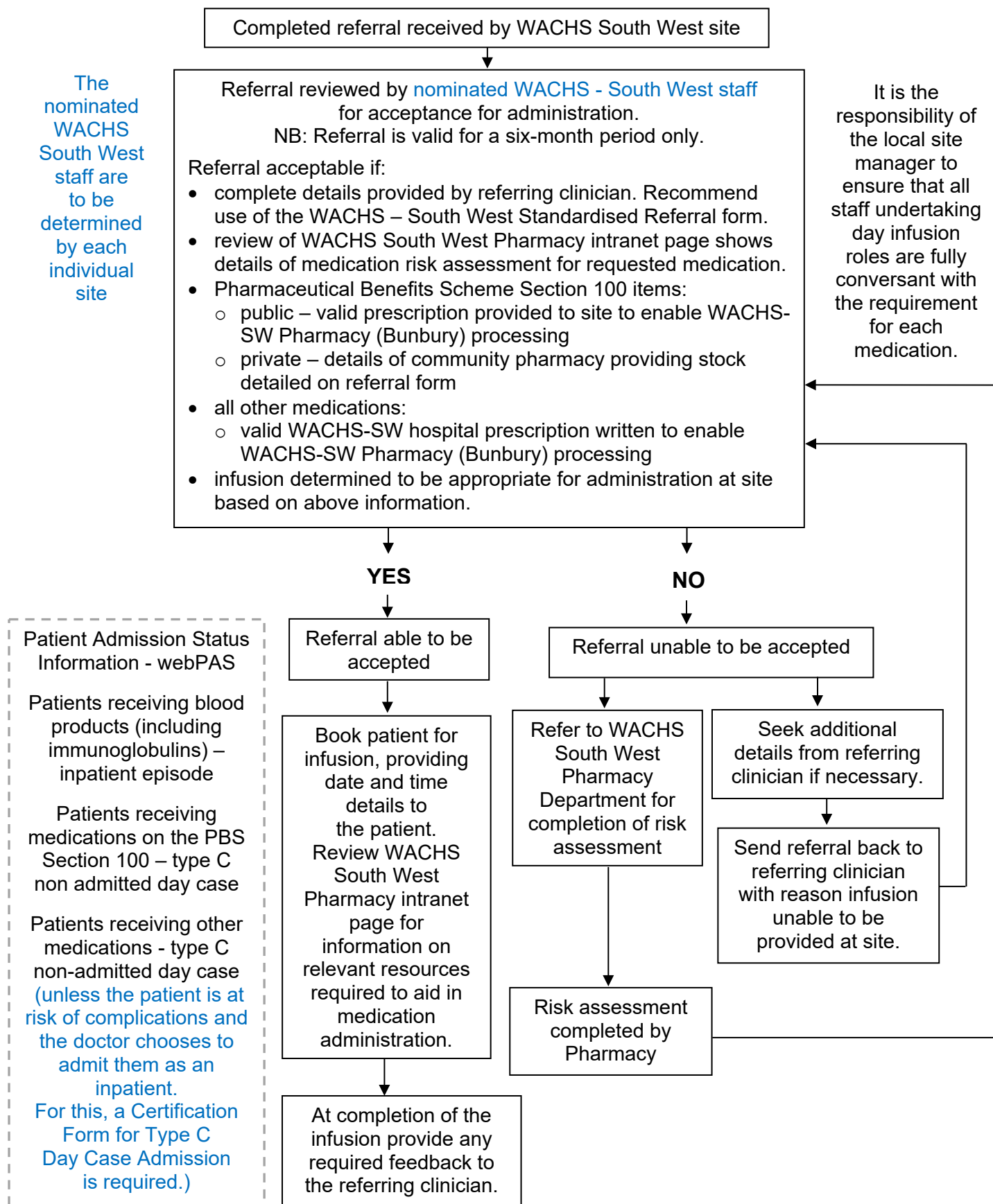
**This document can be made available in alternative formats  
on request for a person with a disability**

<b>Contact:</b>	Regional Director of Nursing and Midwifery		
<b>Directorate:</b>	Nursing	<b>EDRMS Record #</b>	ED-CO-13-47428
<b>Version:</b>	3.00	<b>Date Published:</b>	25 March 2022

Copyright to this material is vested in the State of Western Australia unless otherwise indicated. Apart from any fair dealing for the purposes of private study, research, criticism or review, as permitted under the provisions of the *Copyright Act 1968*, no part may be reproduced or re-used for any purposes whatsoever without written permission of the State of Western Australia.

Printed or saved electronic copies of this policy document are considered uncontrolled.  
Always source the current version from [WACHS HealthPoint Policies](#).

## Appendix 1: Therapeutic Infusion Flowchart



Printed or saved electronic copies of this policy document are considered uncontrolled.  
 Always source the current version from [WACHS HealthPoint Policies](#).