

Introduction

WA Health System

WACHS is the largest country health system in Australia and one of the biggest in the world, providing health services to a 531,000 people, including over 57,000 Aboriginal people, over a 2.5 million square kilometer area.

Metropolitan Services

WA Health is divided into the WA Country Health Service and four Health Service Providers (HSPs) covering the Perth metropolitan area - three Adult services and a specialist Child and Adolescent service:

- North Metropolitan Health Service (NMHS)
- South Metropolitan Health Service (SMHS)
- East Metropolitan Health Service (EMHS)
- Child and Adolescent Health Service (CAHS)

WA Country Health Service (WACHS)

WACHS is a network of health facilities across 7 regions including regional hospitals, district hospitals, nursing posts and community health centers. We provide all health services outside Perth, across an area of more than 2.5 million square kilometres, from Kalumburu in the Kimberley to Albany in the Great Southern.

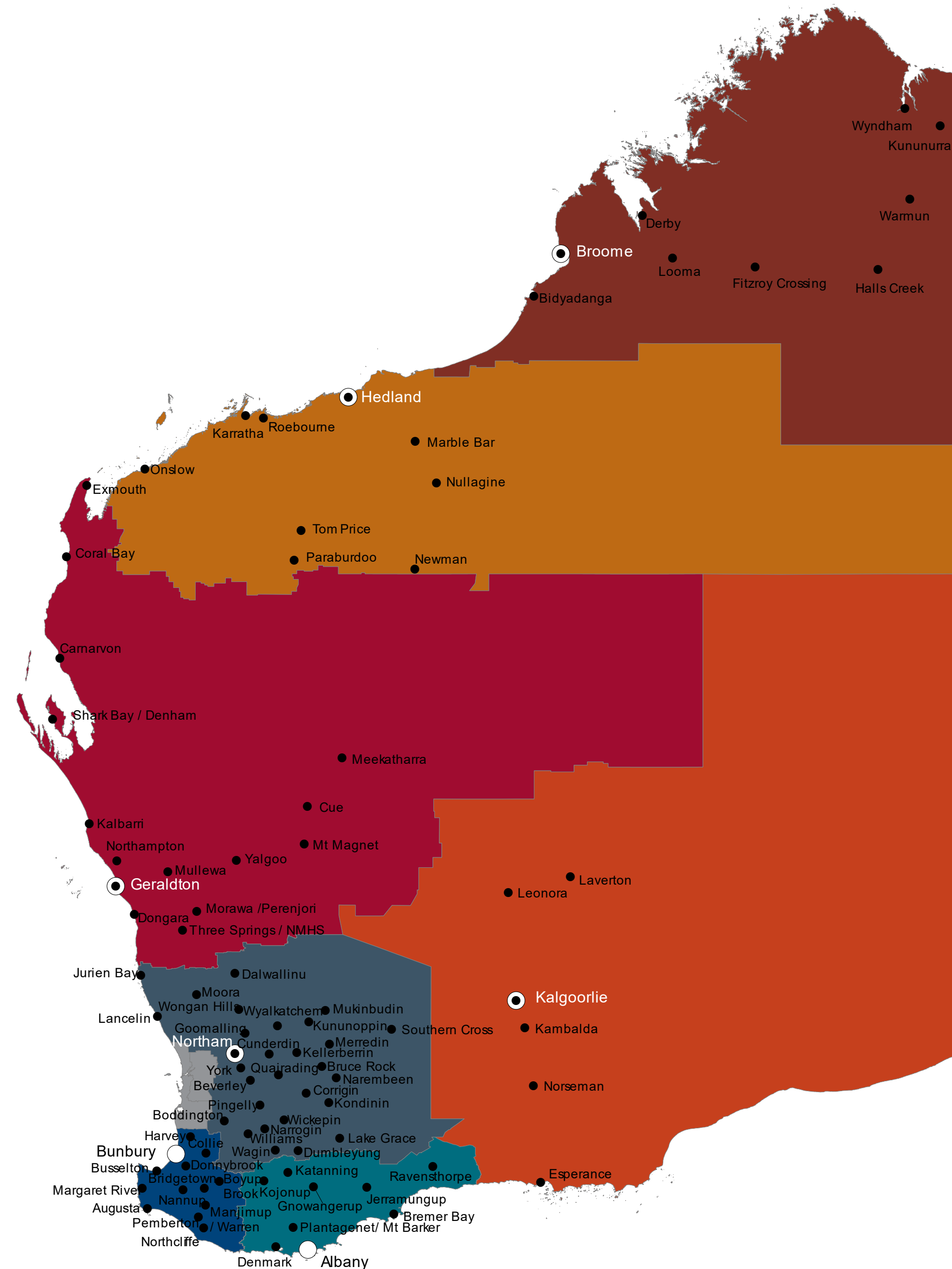
WACHS Services

- Emergency and hospital services
- Population, public and primary healthcare
- Aboriginal health services
- Mental health services
- Drug and alcohol services
- Child, community and school healthcare
- Telehealth services
- Residential and community aged care services

Our Regions

WACHS Regions & Towns

- Kimberley** (MM 6-7, 423,517 km²)
 Towns: Broome, Kununurra, Derby, Halls Creek & Fitzroy Crossing
 Population: 38,801 (approximately half identify as Aboriginal, more than 30 language groups in over 200 indigenous communities)
- Pilbara** (MM 6-7, 507,896 km²)
 Towns: Karratha, Port Hedland, Newman & Tom Price
 Population: 59,552 (15% identify as Aboriginal) + FIFO population.
- Goldfields** (MM 6-7, 771,276 km²)
 Towns: Kalgoorlie, Leonora, Laverton, Norseman & Esperance
 Population: 55,000 (10% identify as Aboriginal) + FIFO population
- Midwest** (MM 3-7, 600,000 km²)
 Towns: Geraldton, Dongara, Meekatharra, Carnarvon & Exmouth
 Population: 63,650 (10% identify as Aboriginal)
- Wheatbelt** (MM 4-7, 154,862 km²)
 Towns: Northam, Narrogin, Merredin, Moora & Jurien Bay
 Population: 76,394 (6% identify as Aboriginal)
- South West** (MM 2-6, 23,000 km²)
 Towns: Bunbury, Collie, Busselton, Manjimup & Margaret River
 Population: 177,300 (2.3% identify as Aboriginal)
- Great Southern** (MM 3-7, 39,007 km²)
 Towns: Albany, Katanning, Denmark, Kojonup & Gnowangerup
 Population: 60,000 (3.6% identify as Aboriginal)





Our Regions

Wheatbelt

The Wheatbelt surrounds the Perth metropolitan area, extending north from Perth to the Midwest region and east to the Goldfields-Esperance region and is bordered to the south by the South West and Great Southern regions and to the west by the Indian Ocean, Perth metropolitan area and Peel region.

The region covers an area of 154,862 square kilometres. It is home to three distinct Aboriginal groups – Njaki Njaki Nyoongar, Ballardong Nyoonger and Gubrun. The region is popular with tourists thanks to its character townships, pioneering history, golden fields, rural farms and wildflowers. It is known for the world-famous Wave Rock, which stretches 100 metres and stands 15 metres high, and the region's Dryandra Woodland is one of Western Australia's most important areas for wildlife preservation.

The Wheatbelt is Western Australia's largest agricultural producer and is the source of nearly two-thirds of the State's wheat production, half of its wool production, and the majority of its lamb and mutton, oranges, honey, cut flowers and a range of other agricultural and pastoral products.

Tourism and gold, nickel and iron ore mining also contribute to the region's economy.

The Wheatbelt is made up of 43 Local Government Authorities.

Wheatbelt Demographics

The Wheatbelt region had a population of almost 80,000 in 2014 (representing 3.1% of the State's population). By 2025, the population is expected to reach almost 88,000 persons. However, although the population will increase, the percentage of the State's population residing in the Wheatbelt is estimated to decrease to 2.8%.

Aboriginal Population

The Aboriginal population in the Wheatbelt totalled almost 3,800 people in 2011, which represented 5.0% of the total Aboriginal population of Western Australia. This is expected to grow to 6,000 by 2025, with the percentage increasing slightly to 5.1%.

Major centres	Population	Distance from Perth
Northam	11,260	97 km
Narrogin	5,255	192 km
Merredin	3,395	260 km
Moora	2,473	174 km
Bindoon (Chittering)	5,535	94 km
Toodyay	4,500	86 km
Jurien Bay (Dandaragan)	3,251	224 km
York	3,605	96 km



Population Remoteness

Major Cities of Australia	
Inner Regional Australia	22%
Outer Regional Australia	54%
Remote Australia	23%
Very Remote Australia	



Wheatbelt Living in the Wheatbelt

Services & Facilities

You will find a range of every day services and facilities throughout the Wheatbelt region, including banks, ATMs, libraries, business centres/telecentres, post offices, shopping (food, grocery and other), hardware stores, police stations, butchers, bakers, cafes, service stations, pubs/taverns, takeaways, newsagents, churches, pharmacies and restaurants. Most of these are located in the region's main town centres of Northam, Narrogin, Merredin, and Moora.

Schooling

There are 69 schools in a region which covers an area larger than the size of Tasmania and contains the major centres of Northam, Narrogin, Merredin, and Moora. Young people come to our schools from communities like Wundowie and Boddington in the west to Southern Cross and Newdegate in the east, Dalwallinu in the north and Broomehill in the south. The families we serve depend on an economy that is based largely on agriculture.

Accommodation

The Wheatbelt offers a range of housing and rental options for those living in the region.

The median house price for Northam is \$235,000 with the overall median weekly rental costing \$313 per week (Source: REIWA 2021)

Regional Development & Employment





Wheatbelt Sports & Recreation

Sport and recreation play a vital role in communities across the Wheatbelt and are a large part of the social fabric that brings the region's communities together.

Popular outdoor recreational activities include bushwalking, bird and wildflower watching, four-wheel driving, fishing, camping, and boating.

Other recreational pursuits such as arts and crafts, dance, music, theatre and performing arts are also well supported in the region. The sporting community in the Wheatbelt is strong and diverse and the region has produced a number of talented athletes across a range of sports.

There are a number of clubs throughout the region, representing a range of recreational activities including hockey, football, cricket, netball, basketball, swimming, golf, athletics, lawn bowls, equestrian, horse racing, greyhound racing, pony clubs, cycling, rifle shooting, soccer, tennis, BMX and martial arts. Sport in the region is supported by the Wheatbelt Sportshouse, which provides support to sport and recreation organisations in the delivery of services to those living in the Wheatbelt.

The Wheatbelt region hosts a number of events throughout the year, including farmer's markets; agricultural field days and shows; film nights; musters; live music and theatre events; wildflower, music, arts, cultural, and food festivals; white water rafting, hot air ballooning, gliding, parachuting, horse races; off road vehicle races; and bachelor and spinster balls.

Climate



The Wheatbelt climate is characterised by high rainfall and mild temperatures near its coastal areas and hot, arid dry summers and mild winters in the eastern areas of the region.

In summer (December to February), the average daily maximum temperature is 34°C with daily minimum temperatures averaging around 17°C. In winter (June to August), the average daily maximum temperature is 17 °C dropping to an average minimum of 5°C.

The average annual rainfall is 328mm, with most rainfall received between March and November.

The region houses a number of natural attractions, the most famous being Wave Rock - an amazing rock formation that stretches 100 metres and stands 15 metres high in the shape of a giant wave about to crash over the surrounding bush, as well as the Pinnacles, unique limestone features on the coast at Cervantes. It is also home to a number of nature reserves and parks that can be easily accessed by vehicle and explored on foot. The area is know for wildflowers hotspots in springtime as well as golden fields of canola stretching as far as eye can see.



Wheatbelt Health Services

The Wheatbelt region covers four health districts: Coastal, Western, Southern and Eastern.

There is a network of public and private health providers servicing the Wheatbelt, who deliver a range of health services across the region including emergency response, primary health, mental health, population health and other ambulatory care services, residential and community aged care and inpatient acute services.

Public health services in the region are well supported by private General Practitioners (GPs), government and not-for-profit agencies, allied health professionals and other private providers.

Aboriginal Health Services are integrated into existing public and private health services throughout the region.

Health Facilities

Hospitals	22
Nursing Posts & Health Centres	10
General Practices	59
Aboriginal Medical Services	0

Hospitals & Beds

District Hospitals

Merredin Hospital	16
Moora Hospital	20
Narrogin Hospital	51
Northam Hospital	61

Small Community Hospitals

Beverley Hospital	11
Boddington Hospital	8
Bruce Rock Memorial Hospital	9
Corrigin Hospital	9
Dalwallinu Hospital	17
Dumbleyung Memorial Hospital	4
Goomalling Hospital	11
Kellerberrin Memorial Hospital	10
Kondinin Hospital	9
Kununoppin Hospital	13
Lake Grace Hospital	8
Narembeen Memorial Hospital	11
Quairading Hospital	12
Southern Cross Hospital	6
Wagin Hospital	8
Wongan Hills Hospital	13
Wyalkatchem-Koorda & Districts Hospital	9
York Hospital	13



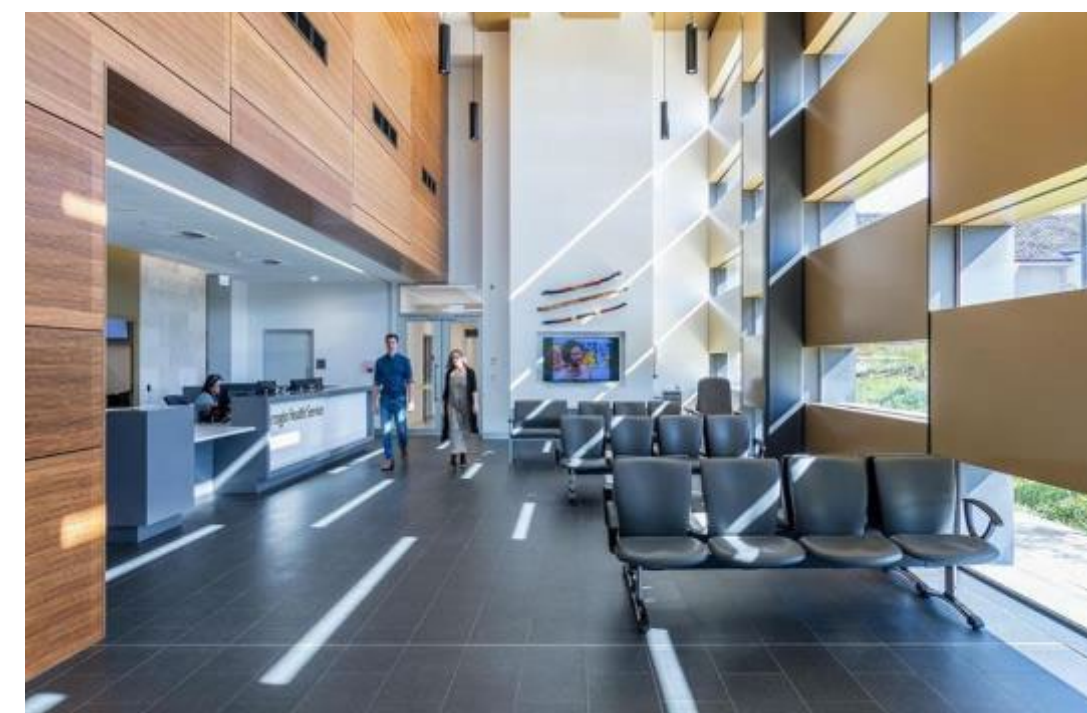
Wheatbelt

Recent Health Infrastructure



Merredin Health Service 2019 - \$26.4 million

New ED, upgrades to palliative care, medical imaging, new building for Ambulatory Care services including Aboriginal health and outpatient services such as mental health & telehealth facilities.



Narrogin Health Service 2019 - \$50 million

New outpatient building, two new birthing rooms, a new inpatient ward, theatre, procedure room and sterilising department, and new dental and chemotherapy services.



Northam Health Service 2019 - \$46.1 million

Expanded ED, a new surgical services area, chemotherapy unit, a hub for community health services including counselling, community health nursing, community mental health.

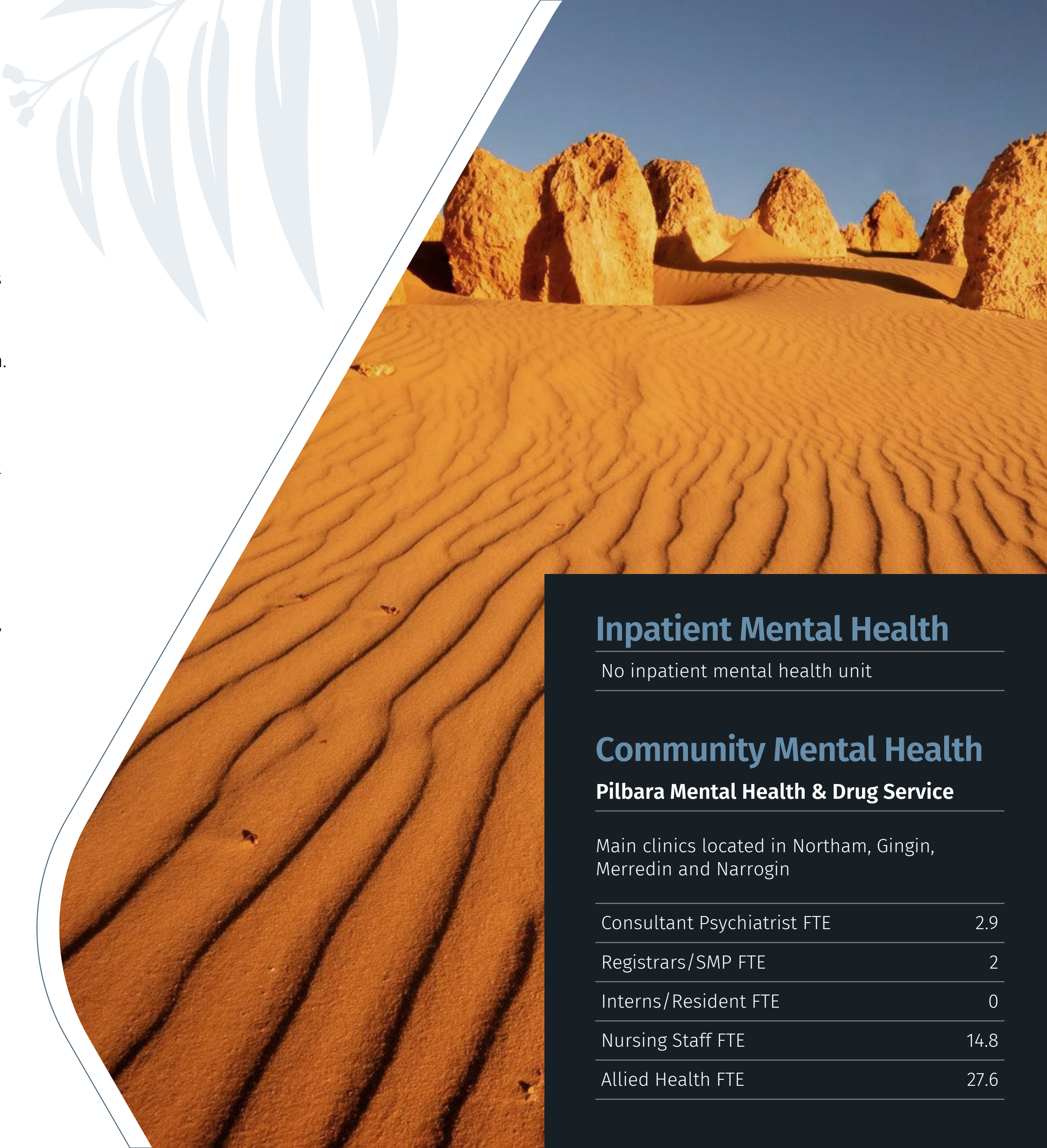
Wheatbelt Mental Health Services

The Wheatbelt Mental Health Service is a team of Mental Health Professionals including Consultant Psychiatrists, Clinical Psychologists, Social Workers, Child and Adolescent Professionals, Aboriginal Workers and Community Mental Health Nurses. This service provides comprehensive assessment and treatment for people with mental health problems. The service can provide training and support to other organisations and professionals.

Locally based, multi-disciplinary teams are located in Northam, Gingin, Merredin and Narrogin. Regular visits are made to outlying areas within the region to meet community needs. Outreach is supported by telephone consultation and videoconferencing. Clinical liaison is provided to hospitals within the region.

We are a comprehensive service for all ages with Perinatal, Child and Adolescent, Youth, Adult and Seniors Teams, supported by Aboriginal Mental Health team and Clinical Psychologists. Referrals are processed through our ACCESS (Triage and Short term acute care team) for all streams, and ongoing care through our Continuing care teams. Average 80-100 referrals per month

- Adult Mental Health**
 Approximately 250-280 Active clients across the region. Team consists of Adult Coordinator, supported by multidisciplinary team with caseloads averaging 20 clients.
- Child and Adolescent and Infant Mental Health (CAMHS)**
 Averages 100-110 Active clients. Team Coordinator and multidisciplinary team with caseloads 10-15 clients
- Youth Mental Health**
 Case manages complex Youth clients with high risk, homeless, comorbid substance use or First Episode. Averages 50-60 active clients, supported by Adult/CAMHS psychiatrists, and multidisciplinary team, case load 10-15 clients
- Seniors Mental Health**
 Averages 40-50 Active clients, supported by Adult psychiatrists and visiting Psychogeriatrician, Seniors coordinator and small multidisciplinary team case load 10-15 clients.
- Drug and Alcohol Services**
 Local D&A services delivered by Non Government organization Holyoake, working in close proximity. Developing model of care towards co-location for 7 day week service delivery.



Inpatient Mental Health

No inpatient mental health unit

Community Mental Health

Pilbara Mental Health & Drug Service

Main clinics located in Northam, Gingin, Merredin and Narrogin

Consultant Psychiatrist FTE	2.9
Registrars/SMP FTE	2
Interns/Resident FTE	0
Nursing Staff FTE	14.8
Allied Health FTE	27.6